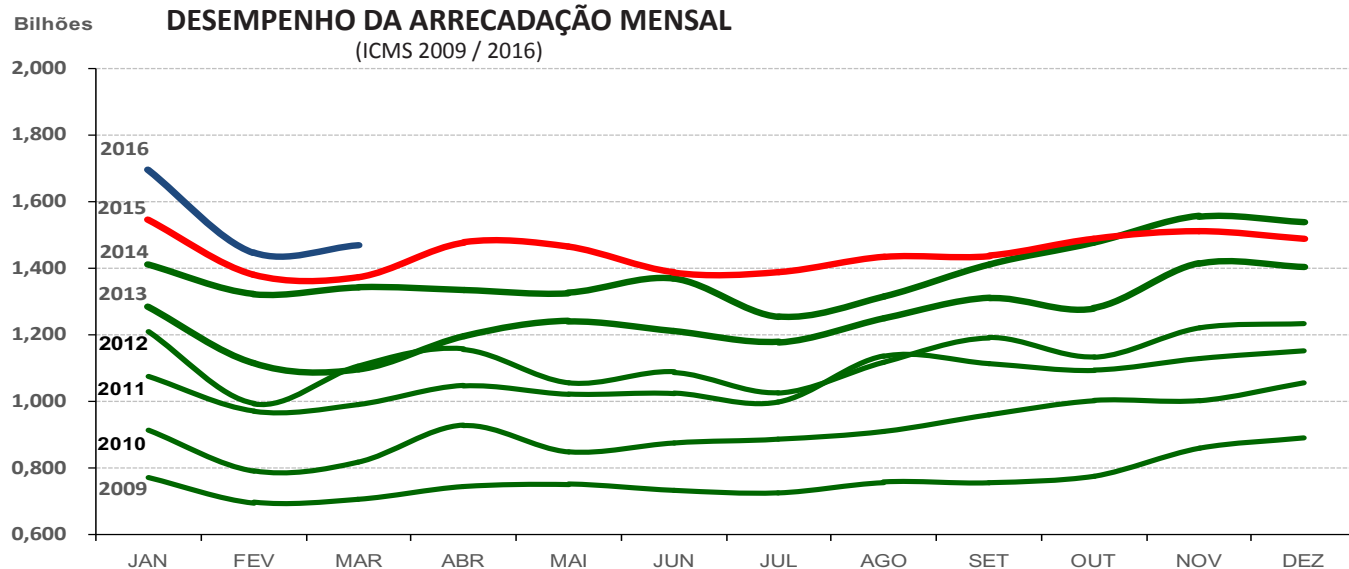
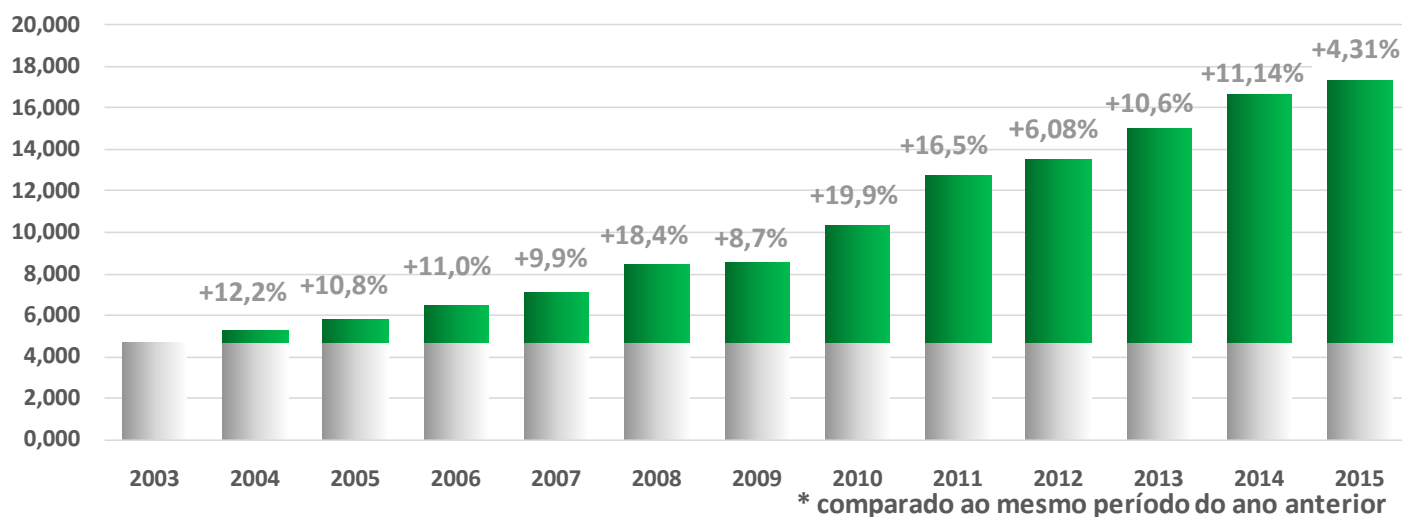


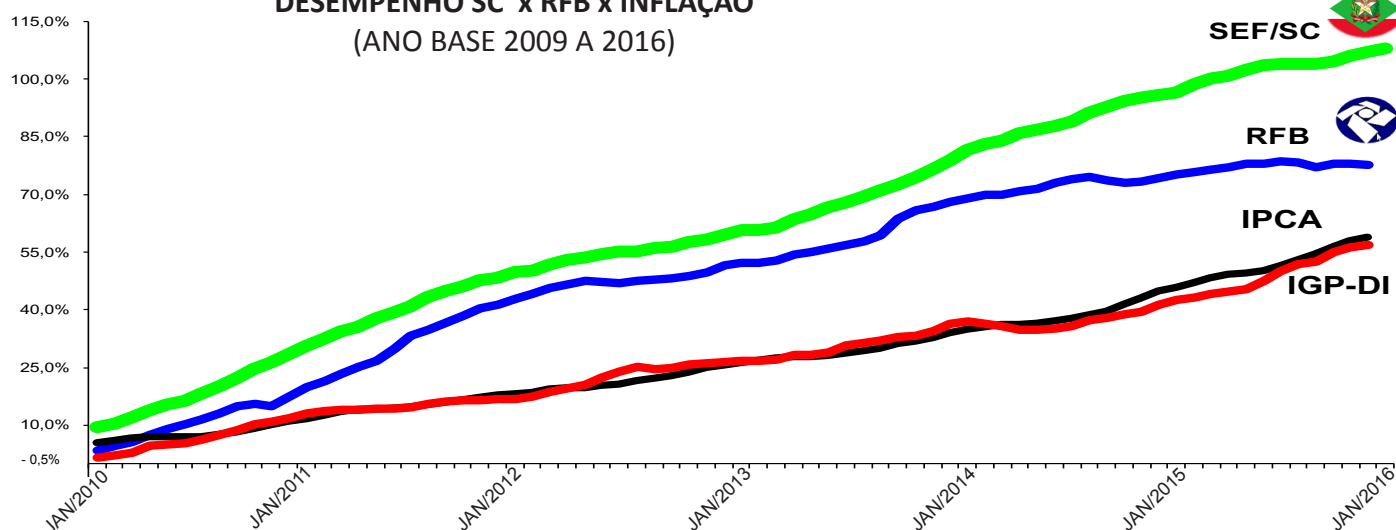
DESEMPENHO DA ARRECADAÇÃO MENSAL (ICMS 2009 / 2016)



DESEMPENHO DA ARRECADAÇÃO ANUAL (ICMS 2003/2016)



DESEMPENHO SC x RFB x INFLAÇÃO (ANO BASE 2009 A 2016)



* SEF/SC : ARRECADAÇÃO = Receita Tributária + Transferências